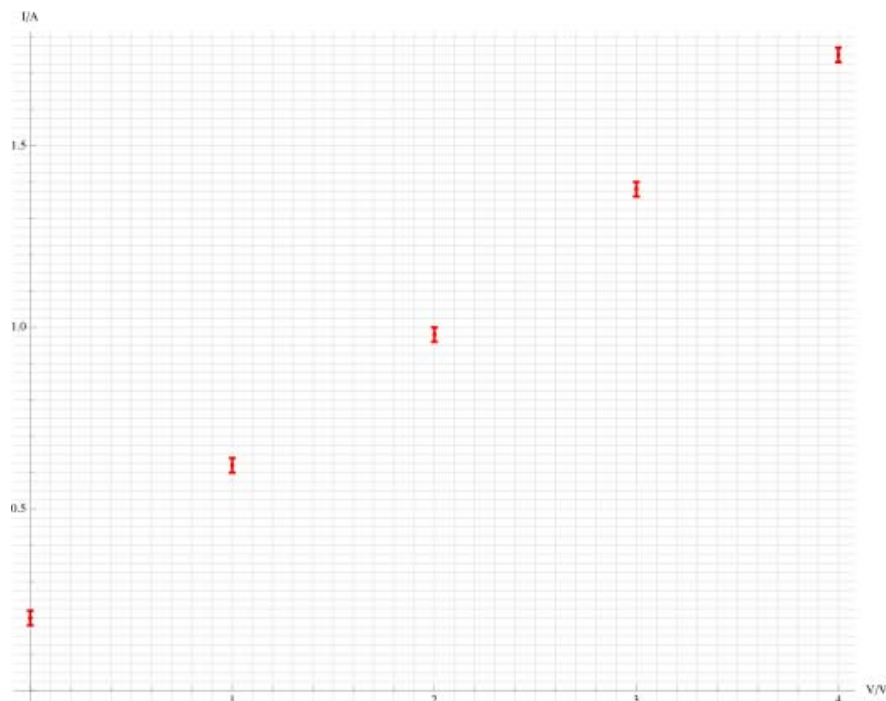


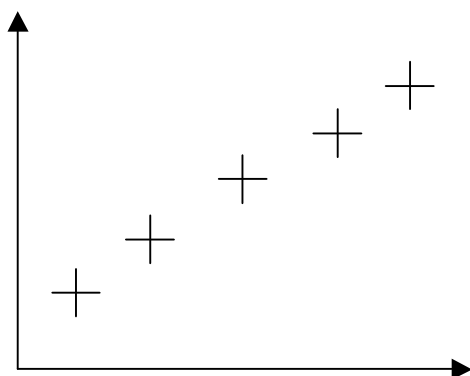
Extension Worksheet – Topic 1, Worksheet 2

- 1 In an ohmic resistor the current I is proportional to the voltage V across the resistor. In an experiment the following data points were obtained.



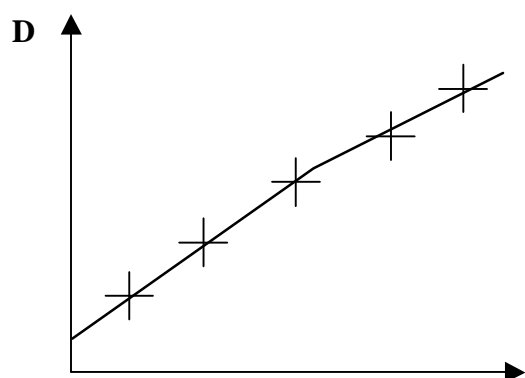
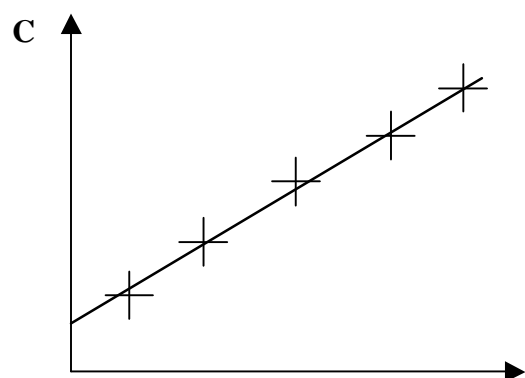
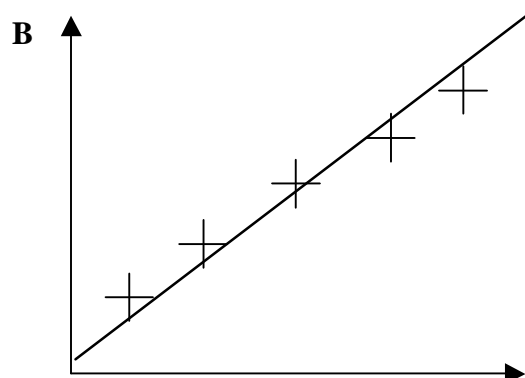
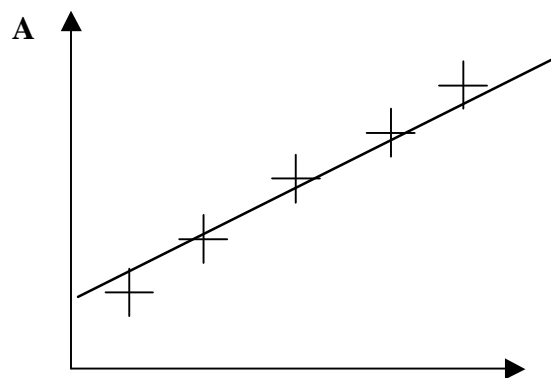
It may be deduced that in the experiment

- A there are substantial random errors
B there are substantial systematic errors
C there are substantial random and systematic errors
D there are no substantial random or systematic errors
- 2 In an experiment five data points were plotted as shown.



[1]

The line of best fit is



[1]